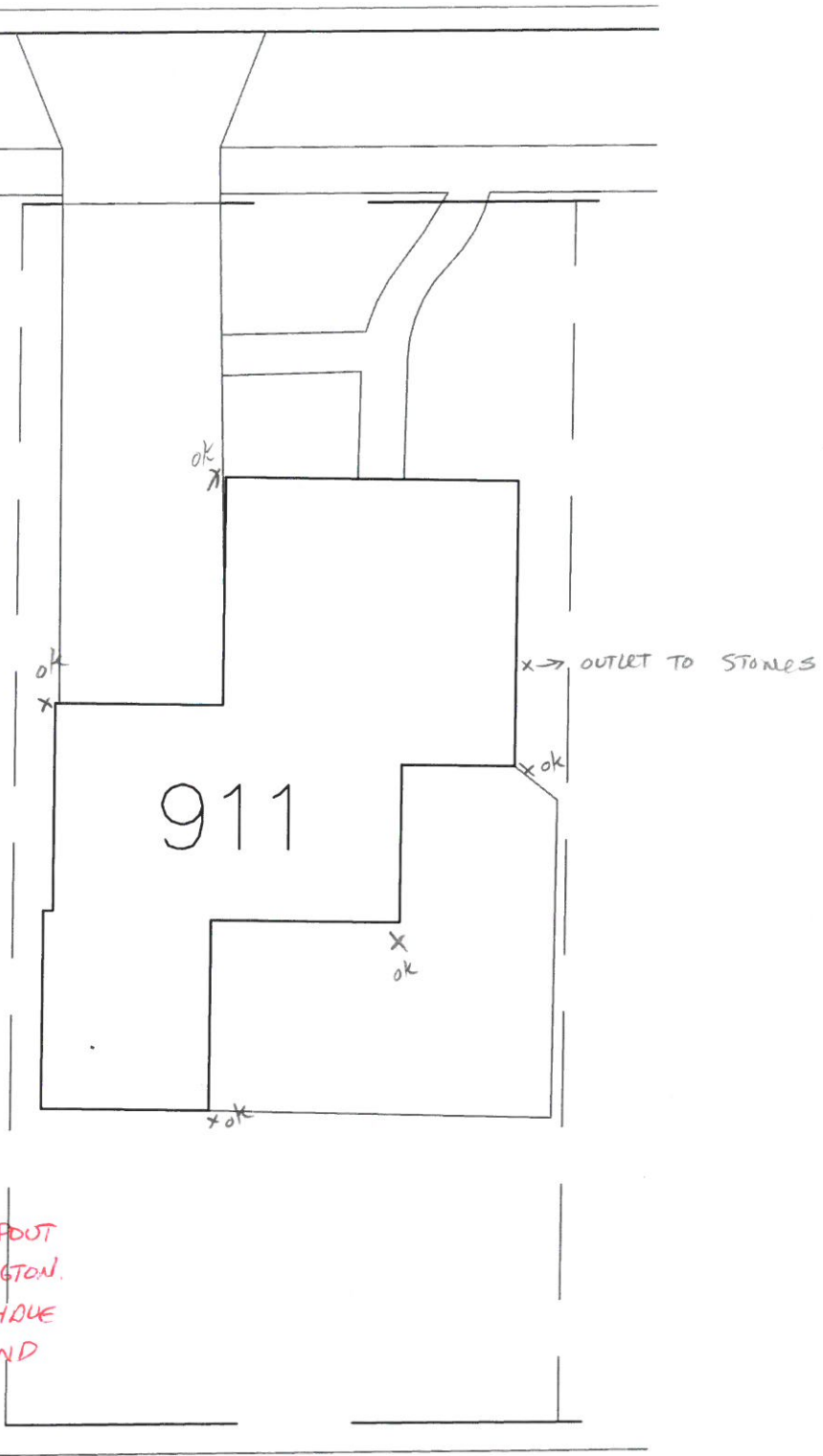


WEST WASHINGTON STREET

N
1" = 20'



DATE: 10-3-12

INSPECTED BY: MARTY CROSSLAND

INVESTIGATION OF ILLEGAL DOWNSPOUT
CONNECTIONS AT 911 W. WASHINGTON.
THREE CONNECTIONS IN QUESTION HAVE
EITHER BEEN REMEDIED OR FOUND
TO ^{OUTLET} ELSEWHERE.